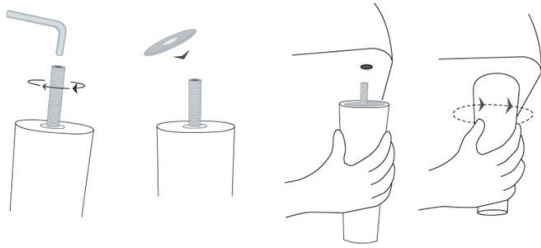


HARDWARE MAINTENANCE

Any piece of furniture with attached legs – such as, dining chairs and tables, end tables, and cocktail tables as well as sofas, loveseats, and other chairs – may require some maintenance in order to keep the bolts, screws, and nuts tight and problem free.



Once this furniture has been delivered to you, the moisture level in the wood will adapt to your home. This and other factors, such as vibration from use, will affect the nuts and bolts. We highly recommend that after the furniture has been in your home for a few months and annually thereafter, check the nuts and bolts to ensure a tight fit.

In addition, even reclining furniture needs to be tightened. Bolts, screws, and knobs can loosen after an extended period. This can create damage to the frame and instability to the furniture. We recommend you check and tighten all bolts, screws, and knobs at least every four (4) months or as needed.

